

iVY







Originally designed by Mollo-Christensen in 1953, the house is located in the Five Fields community, a modernist development established by The Architects Collaborative (TAC) in the post-war 1950s. It was previously an 80-acre parcel owned by the Cutler Farm, which was expanded and divided by stone walls into five fields, thus giving the community its name.

The land was subdivided into 68 lots and left about 20 acres for common land. TAC produced several houses with unconventional design, envisioning a community of well-designed, well-sited, and moderately priced houses, which reflected modern social idealism. Their standard plans incorporated mass-produced components to offer affordable houses; however, these supposedly affordable models became fairly expensive through expansion and custom modifications over time. To this day, the Five Fields properties have remained highly appreciated and desired.



The land was subdivided into 68 lots and left about 20 acres for common land. TAC produced several houses with unconventional design, envisioning a community of well-designed, well-sited, and moderately priced houses, which reflected modern social idealism. Their standard plans incorporated mass-produced components to offer affordable houses; however, these supposedly affordable models became fairly expensive through expansion and custom modifications over time. To this day, the Five Fields properties have remained highly appreciated and desired.

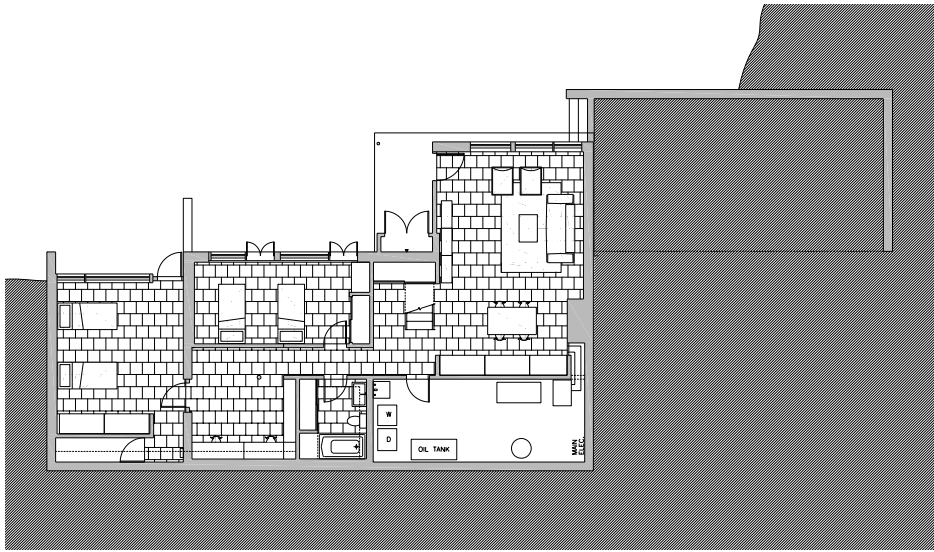


The design seeks to recuperate some latent spatial qualities and reinforce the dialogue with the exterior.

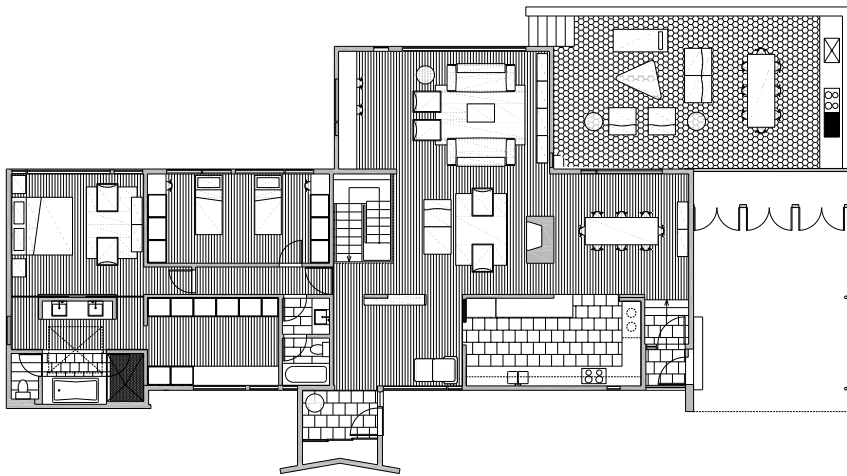
By strategically introducing floor-to-ceiling mirrors, we have multiplied the views and the occupants, reminding us of scenes from Orson Welles' movie *The Lady from Shanghai*. The entire space feels as if it has acquired a different, always moving, dimension. The mirrors also bring the landscape into the interior space. These reflected images make the spatial experience more abstract, and change the way interior spaces relate to each other and with the exterior.







Lower level



Entry level

The renovation achieved more unobstructed views and circulation, enabling the space to feel more open and connected. The lower floor required reworking of the mechanical services to allow more space for use. The interior material palette echoes the sense of the house's simplicity. Clean and seamless stucco lucido (plaster) and durable and high-performance Brazilian slate were used. The intention was to restore and repair the existing conditions where necessary and introduce new elements to a minimal extent.







[Project Team]

Roberto Viola Ochoa

Chris Hardy

Drawings & Graphics

Roberto Viola Ochoa

Chris Hardy

Junko Yamamoto

Photographs

Roberto Viola Ochoa

Cory Gans

Booklet

iVY

Contact

iVY Design Associates

email: info@ivydesign.associates

<https://www.ivydesign.associatesh>

 @ivydesignassociates



